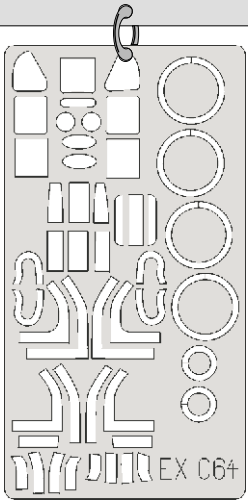


eduard
MASK

A-20 Havoc 1/48

The die-cut mask for accurate canopy frame painting of the
AMT scale 1/48

EX 064



A503



2x

A502

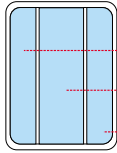


2x

1.)

INTERIOR COLOR

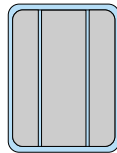
B505



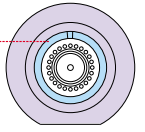
2.)

CAMOUFLAGE COLOR

B505

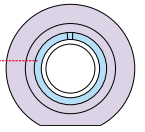


I38



2x

I39



2x

I36



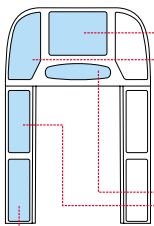
I37

REFERENCES:

Squadron / Signal Publications
in action 1056
Scale Models 1/ 1978
Replic #46/ 1995

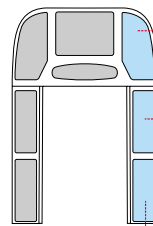
1.)

A500



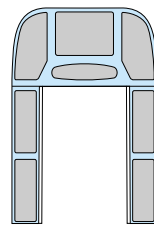
2.)

A500

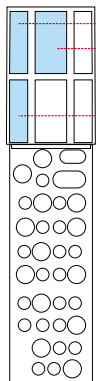


3.)

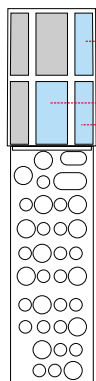
A500



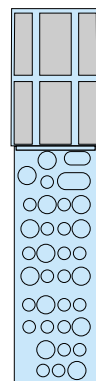
A501



A501



A501



INTERIOR COLOR

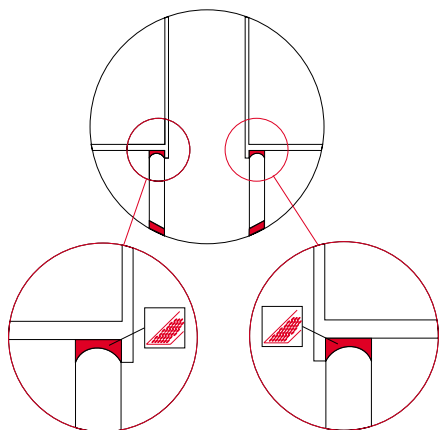
INTERIOR COLOR

CAMOUFLAGE COLOR

CAMOUFLAGE COLOR

1.)

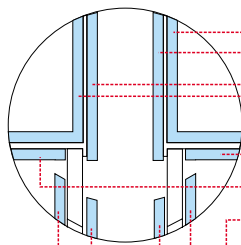
B504



CUT A SHARP ANGLE

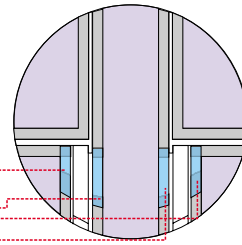
2.)

B504

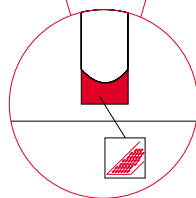
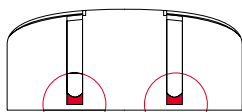


3.)

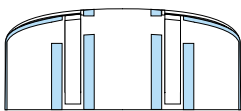
B504



B504



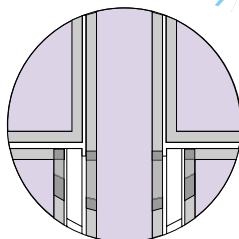
CUT A SHARP ANGLE



B504

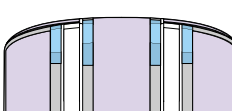
4.)

INTERIOR COLOR



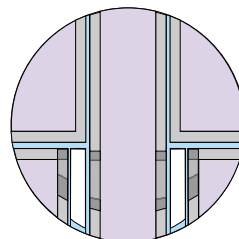
B504

5.)



B504

CAMOUFLAGE COLOR



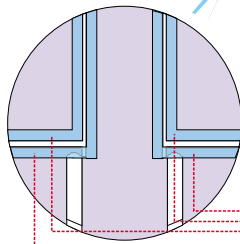
B504



1.)

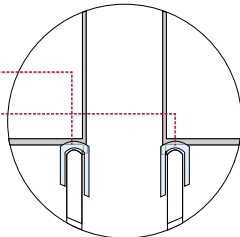
INTERIOR COLOR

B504



3.)

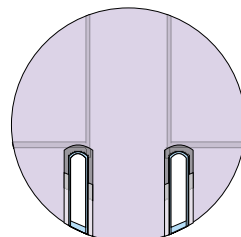
B504



5.)

CAMOUFLAGE COLOR

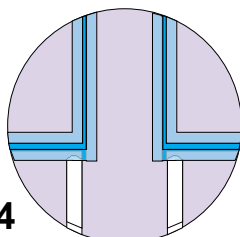
B504



2.)

CAMOUFLAGE COLOR

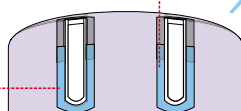
B504



4.)

INTERIOR COLOR

B504



CAMOUFLAGE COLOR

B504

