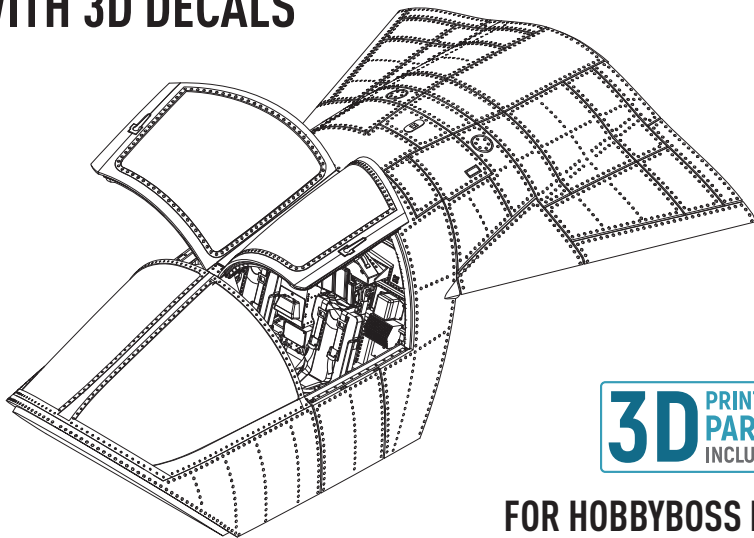


 **RESKIT**<sup>™</sup>  
RESIN PARTS  
FOR SCALE PLASTIC KITS

YOU CAN FIND INSTRUCTIONS  
IN PDF FORMAT ON THE WEBSITE

INSTRUCTION **RSU48-0176**

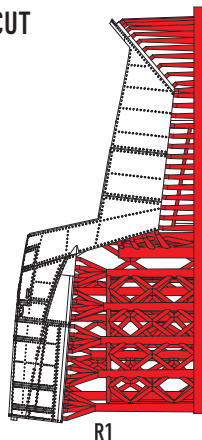
# F-111F COCKPIT EARLY MODIFICATION WITH 3D DECALS



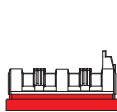
**3D** PRINTED  
PARTS  
INCLUDED

FOR HOBBYBOSS KIT

CUT



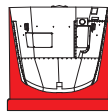
R2



R3\*



R4



R5

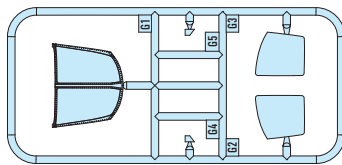


R6

R7

R8

R9



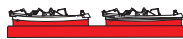
R10



R11



R12



R28



R29

\* AFTER REMOVING THE STAND FROM THE PART R3, SHARPEN THE PART AT THE ANCHOR POINT TO A THICKNESS OF 0.5 MM. YOU ALSO NEED TO SHARPEN THE PART A17 FROM THE HOBBYBOSS SET

R15



R13

R17

LEFT VIEW

R16



R18

R14

RIGHT VIEW

3D PRINTED PARTS\*\*

R22



R21



R23

LEFT VIEW

R24



R25

R26



R27

RIGHT VIEW

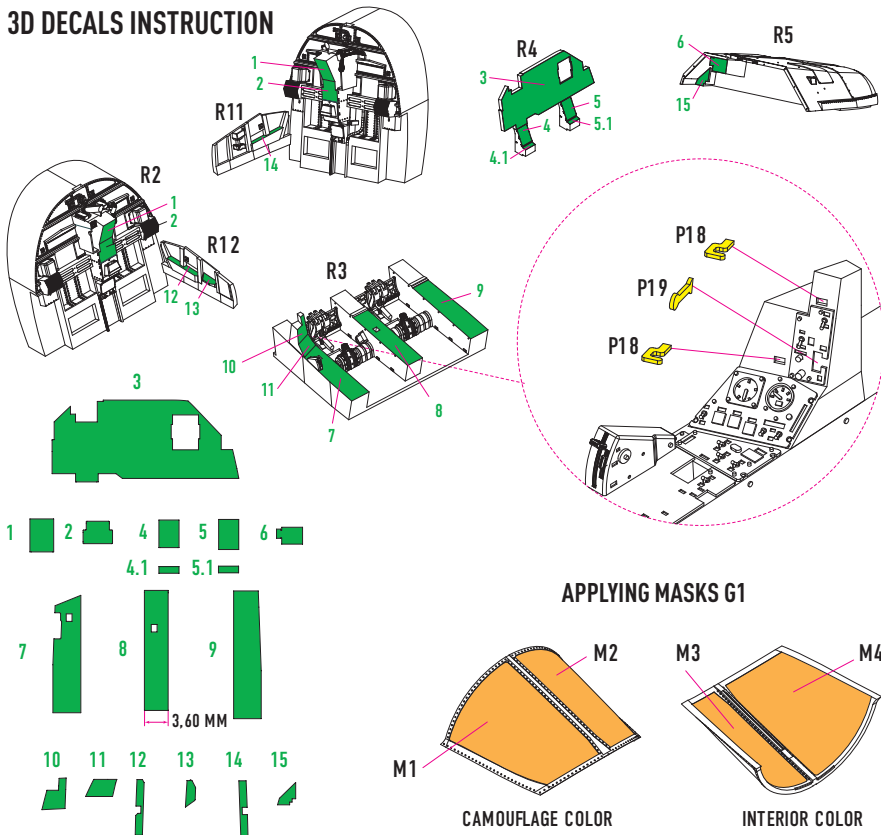


R30

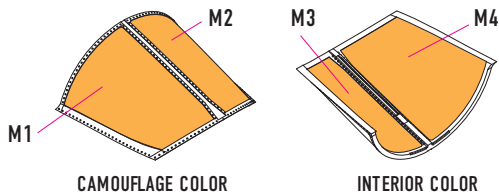


R31

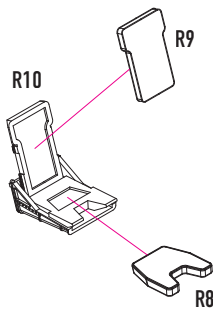
# 3D DECALS INSTRUCTION



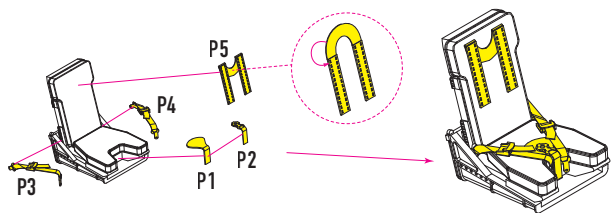
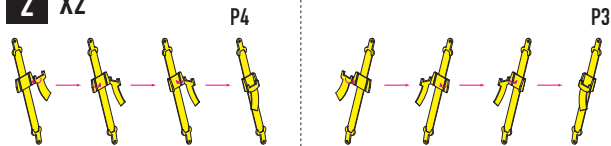
## APPLYING MASKS G1



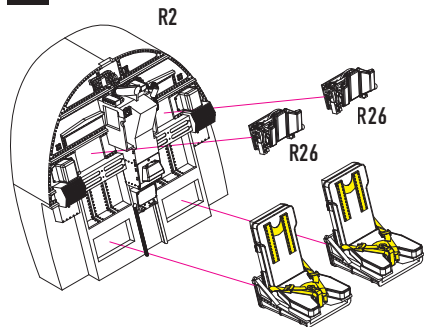
**1** X2



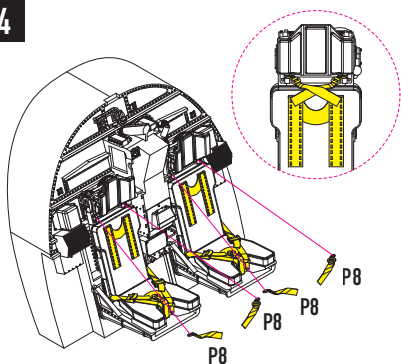
**2** X2



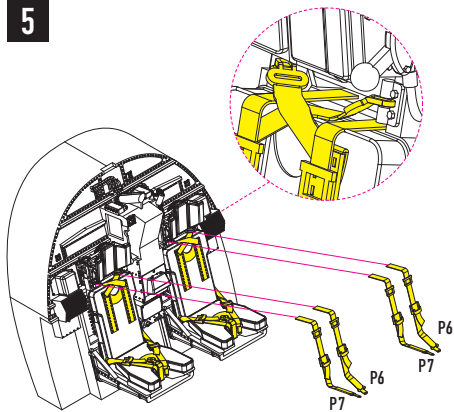
**3**



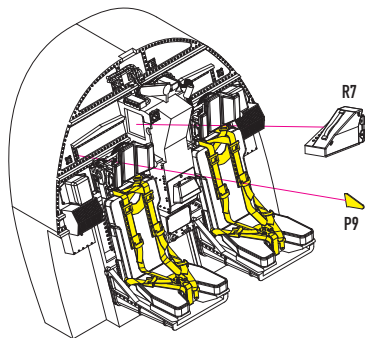
**4**



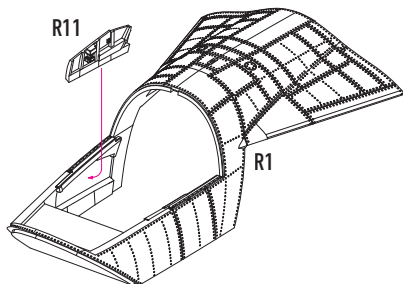
5



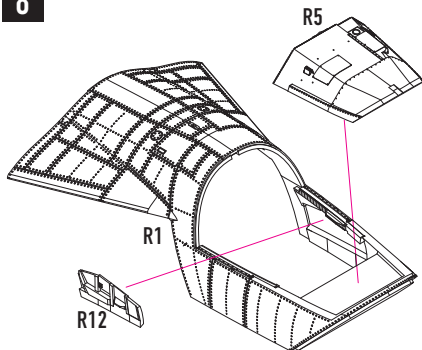
6

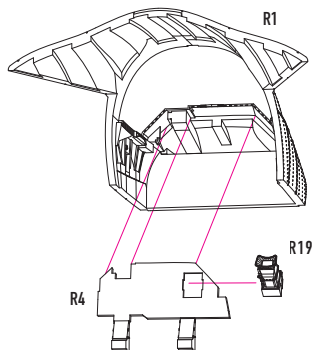
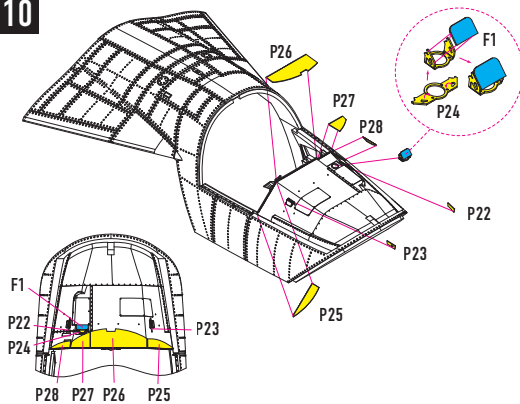
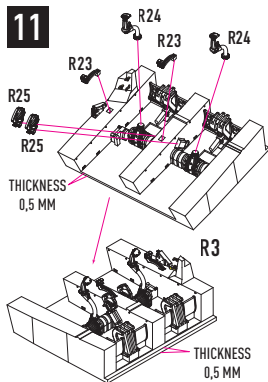
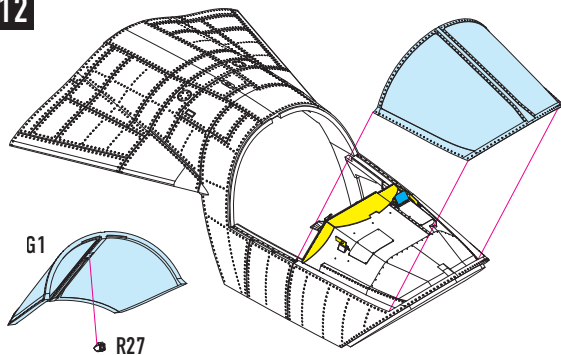


7

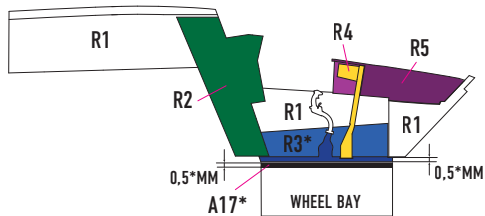
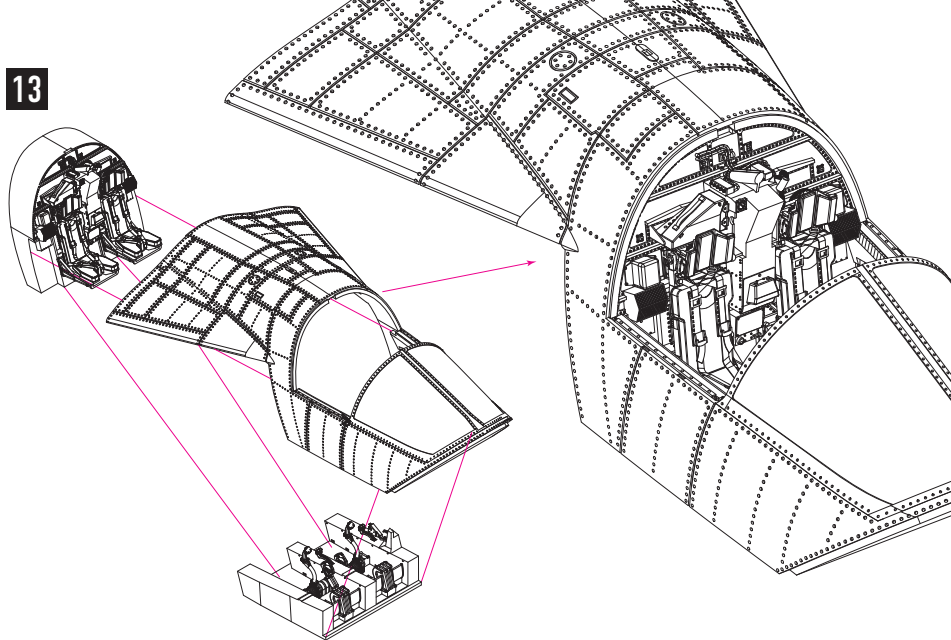


8



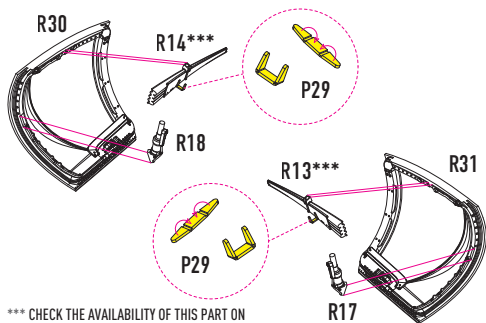
**9****10****11****12**

13



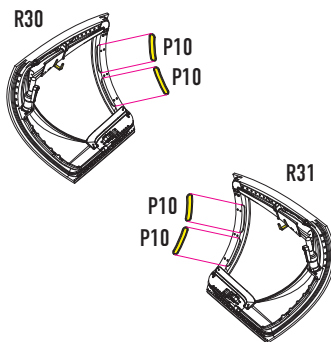
\* AFTER REMOVING THE STAND FROM THE PART R3, SHARPEN THE PART AT THE ANCHOR POINT TO A THICKNESS OF 0.5 MM. YOU ALSO NEED TO SHARPEN THE PART A17\* FROM THE HOBBYBOSS SET

## 14 FOR CLOSED CANOPY

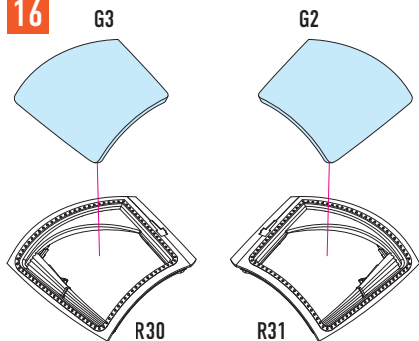


\*\*\* CHECK THE AVAILABILITY OF THIS PART ON THE PHOTOS OF THE AIRCRAFT YOU ARE BUILDING

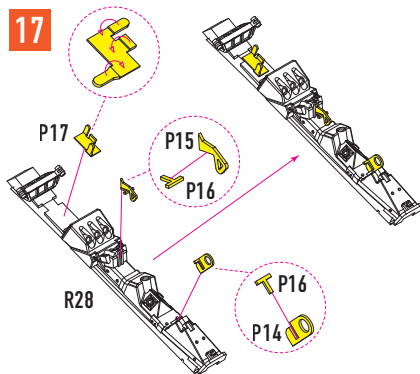
## 15



## 16



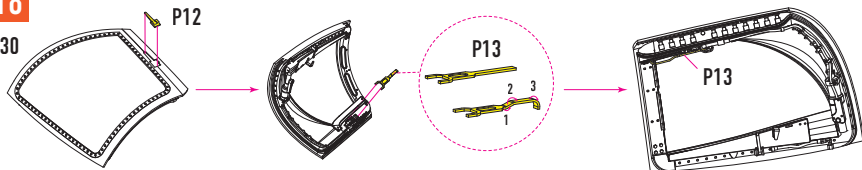
## 17





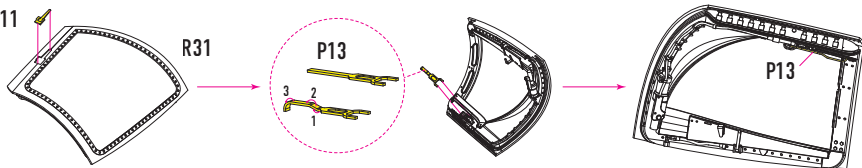
**18**

R30

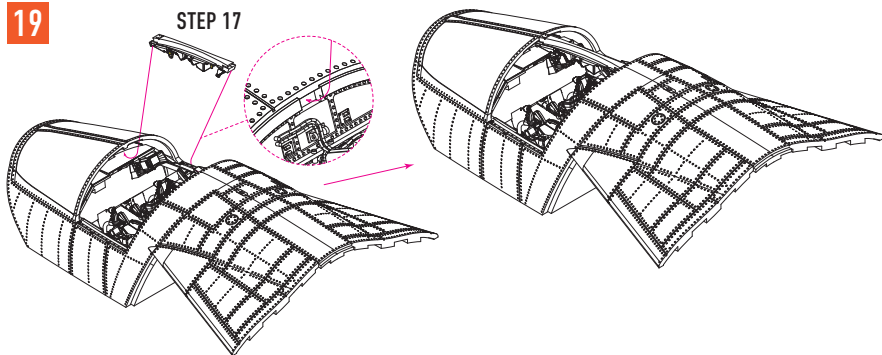


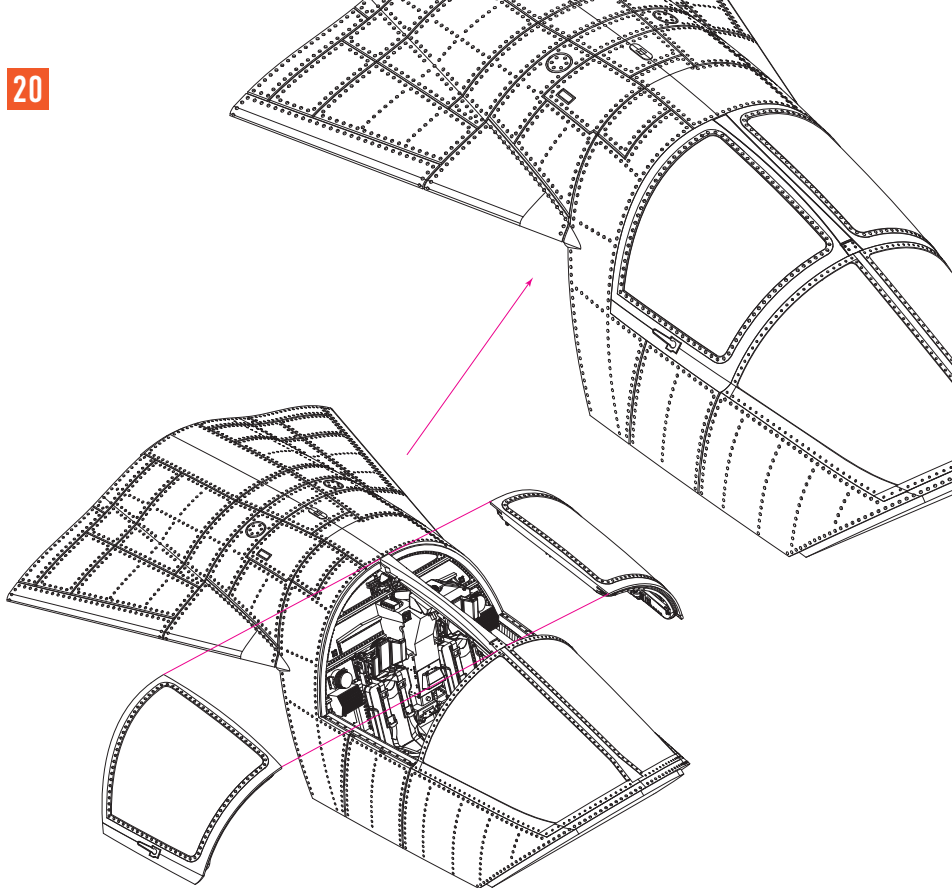
P11

R31

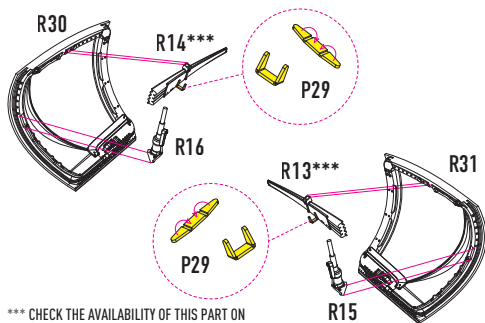
**19**

STEP 17



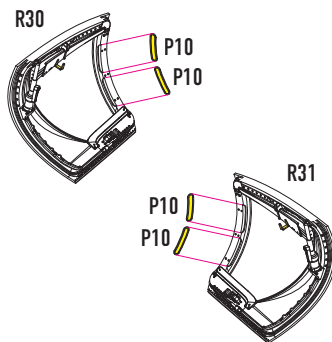


## 14 FOR OPEN CANOPY

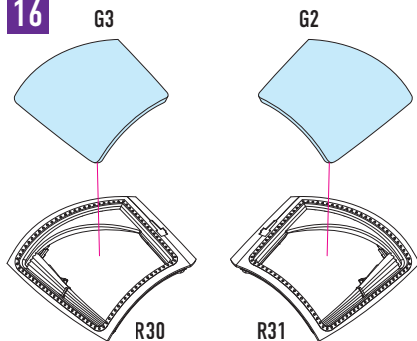


\*\*\* CHECK THE AVAILABILITY OF THIS PART ON THE PHOTOS OF THE AIRCRAFT YOU ARE BUILDING

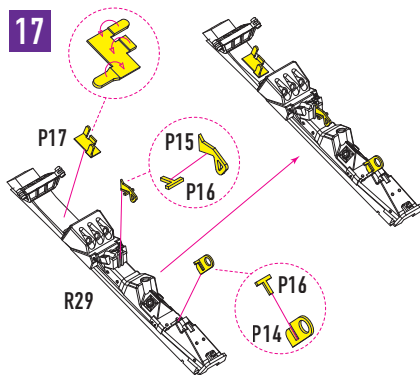
## 15



## 16

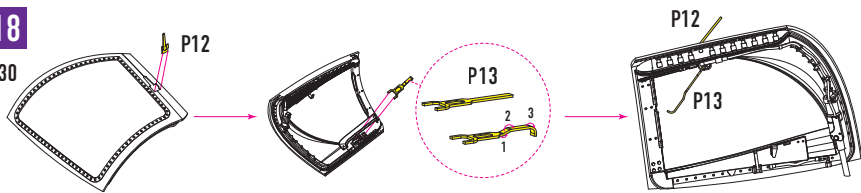


## 17



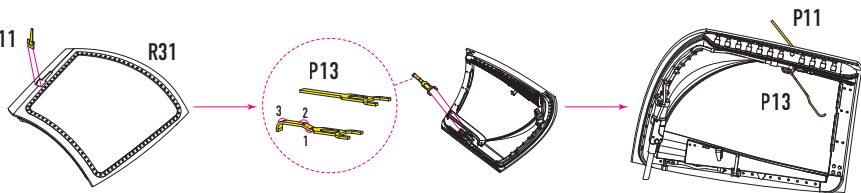
**18**

R30

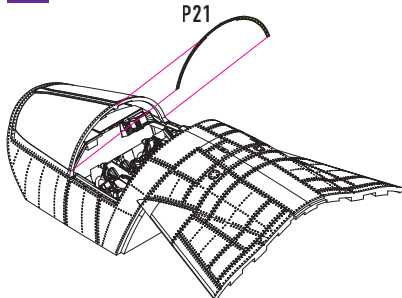
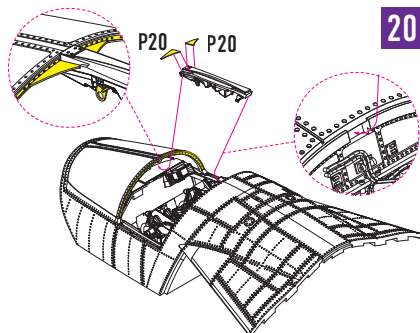


P11

R31

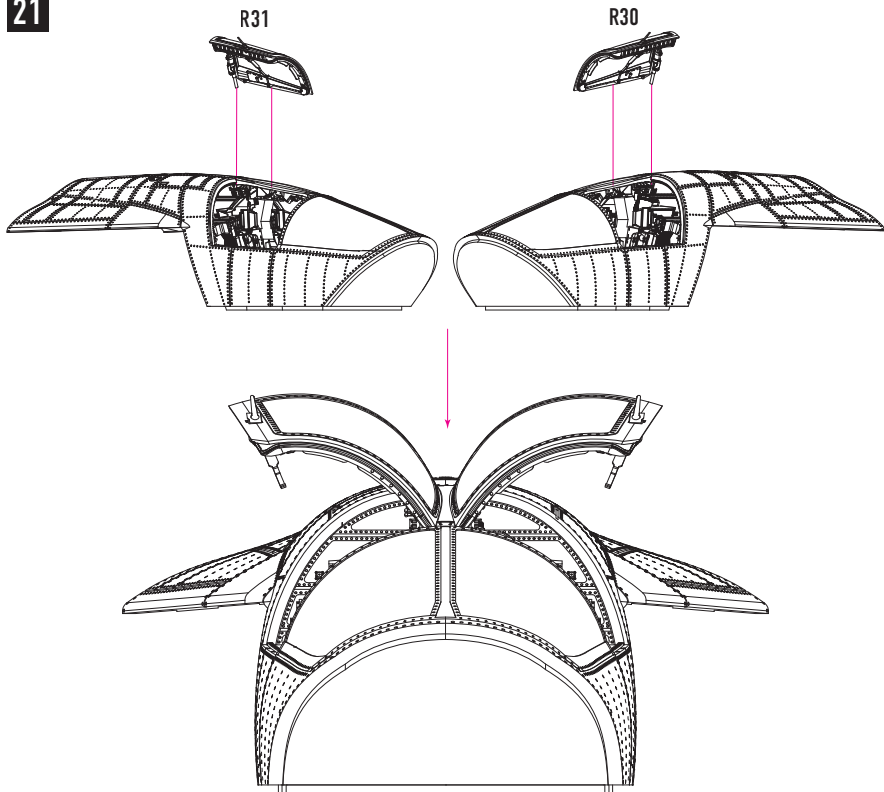
**19**

P21

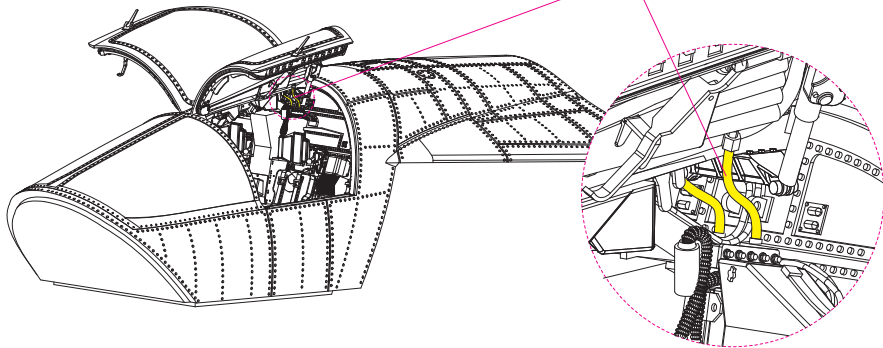
**20**

BEFORE GLUING MAKE THE FLEXION OF THE P20 PARTS  
EQUAL TO THE FLEXION OF THE G1 PART EDGE.

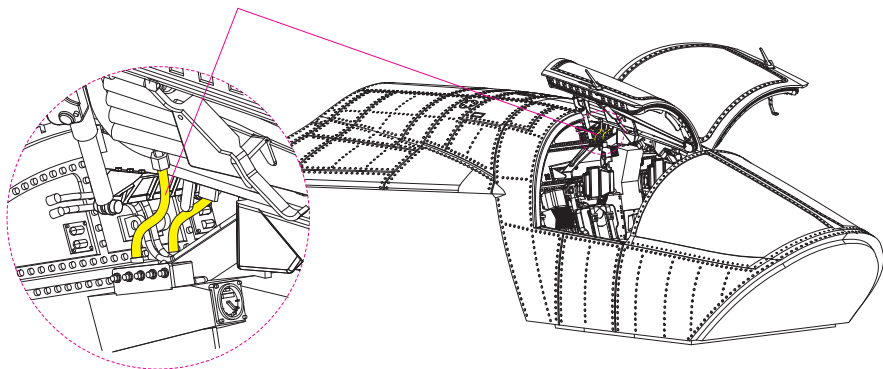
21

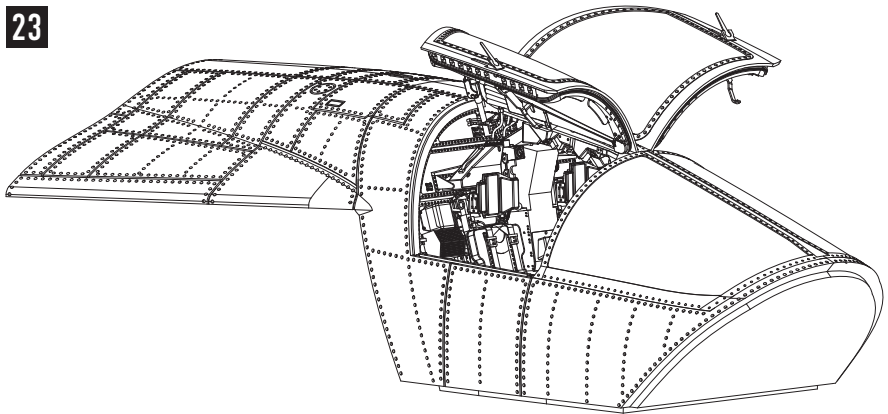


USE WIRE D: 0.3MM, L: 5MM

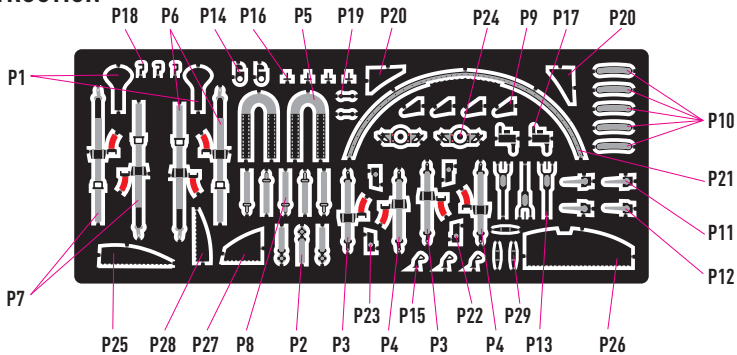


USE WIRE D: 0.3MM, L: 5MM





## PE INSTRUCTION



YOU CAN FIND INSTRUCTIONS  
IN PDF FORMAT ON THE WEBSITE

**RESKIT-MODELS.COM**

General Issues: [info@reskit.com.ua](mailto:info@reskit.com.ua)

Wholesales: [sales@reskit.com.ua](mailto:sales@reskit.com.ua)

Claim Resolution: [claims@reskit.com.ua](mailto:claims@reskit.com.ua)