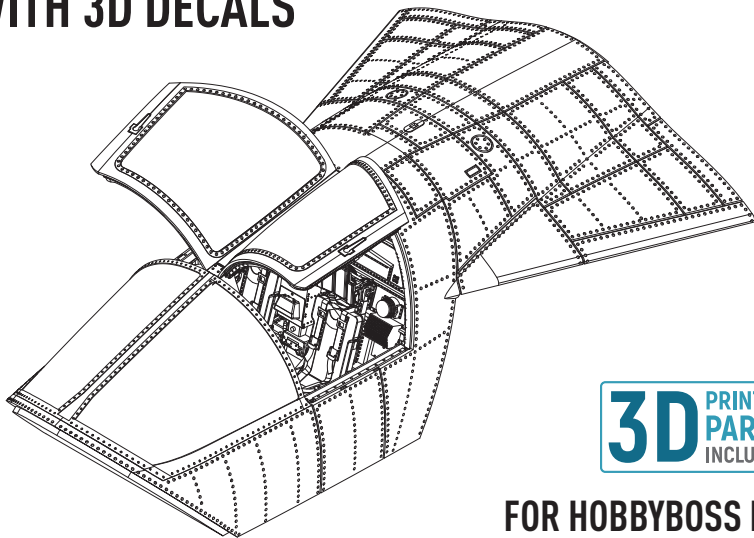


**RESKIT**<sup>TM</sup>  
RESIN PARTS  
FOR SCALE PLASTIC KITS

YOU CAN FIND INSTRUCTIONS  
IN PDF FORMAT ON THE WEBSITE

INSTRUCTION **RSU48-0199**

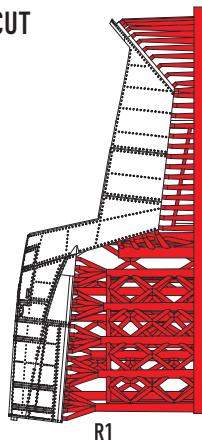
# F-111C COCKPIT LATE MODIFICATION WITH 3D DECALS



**3D** PRINTED  
PARTS  
INCLUDED

FOR HOBBYBOSS KIT

# CUT



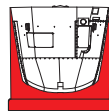
R2



R3\*



R4



R5

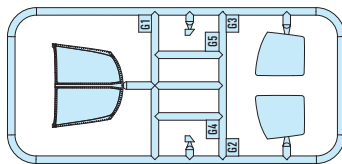


R6

R7

R8

R9



R10



R11



R12



R28



R29

\* AFTER REMOVING THE STAND FROM THE PART R3, SHARPEN THE PART AT THE ANCHOR POINT TO A THICKNESS OF 0.5 MM. YOU ALSO NEED TO SHARPEN THE PART A17 FROM THE HOBBYBOSS SET

R15



R13

R17

LEFT VIEW

R16



R18

R14

RIGHT VIEW



## 3D PRINTED PARTS\*\*

R22



R21



R23

LEFT VIEW

R24



R25

R27

RIGHT VIEW

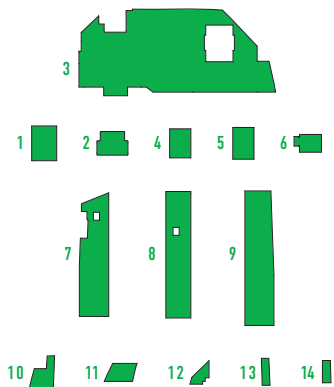
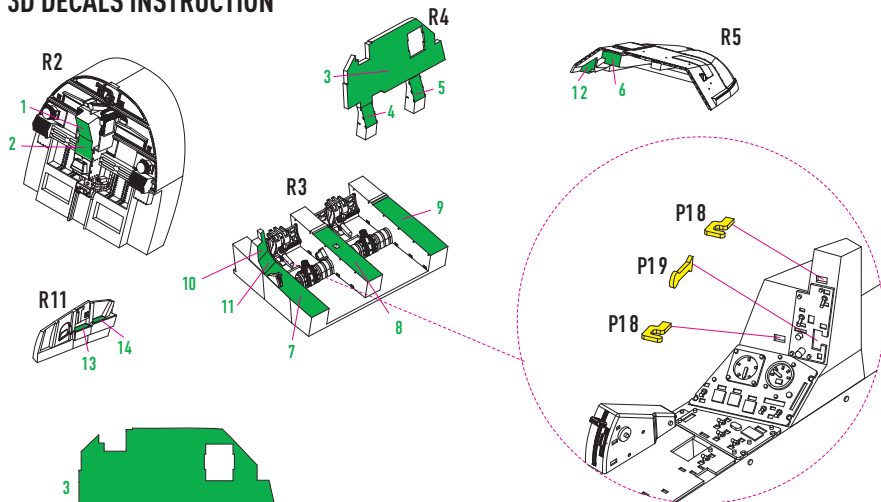


R30

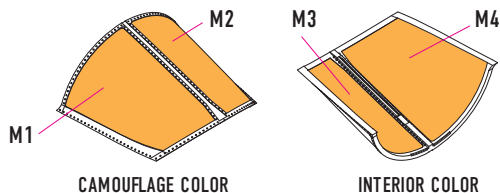


R31

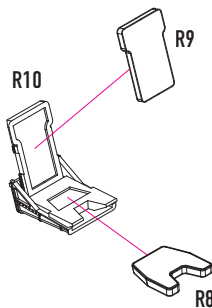
# 3D DECALS INSTRUCTION



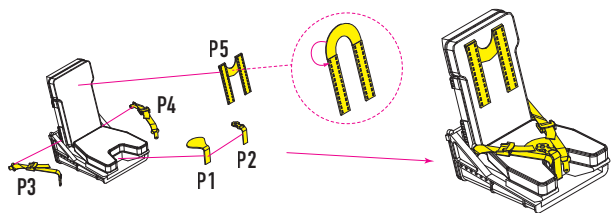
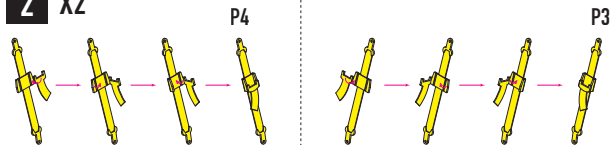
## APPLYING MASKS G1



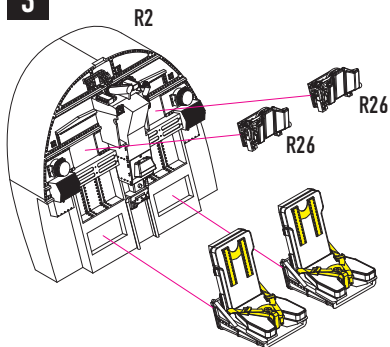
**1** X2



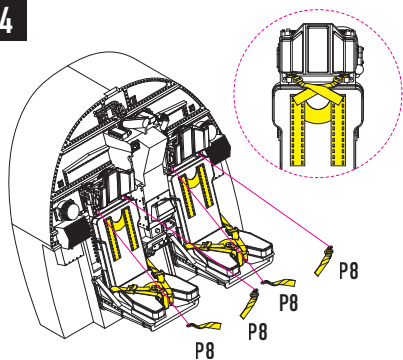
**2** X2



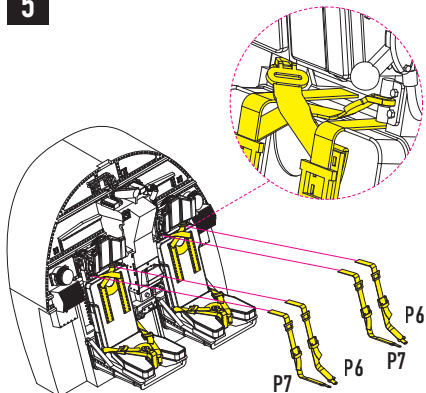
**3**



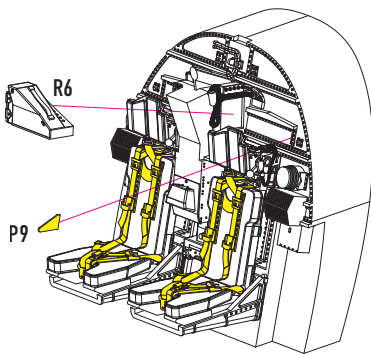
**4**



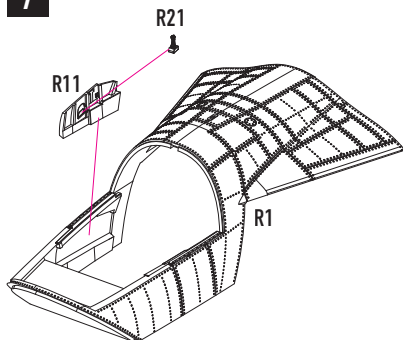
5



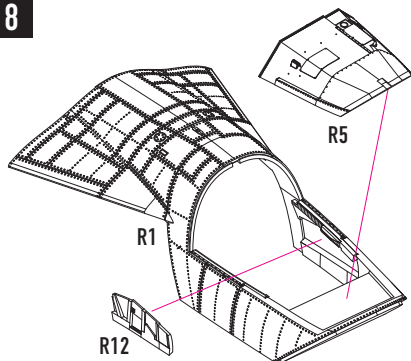
6

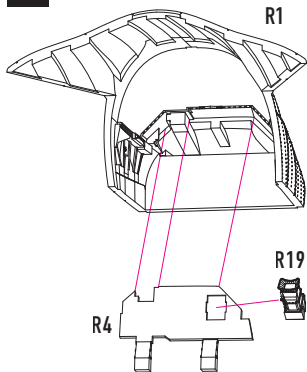
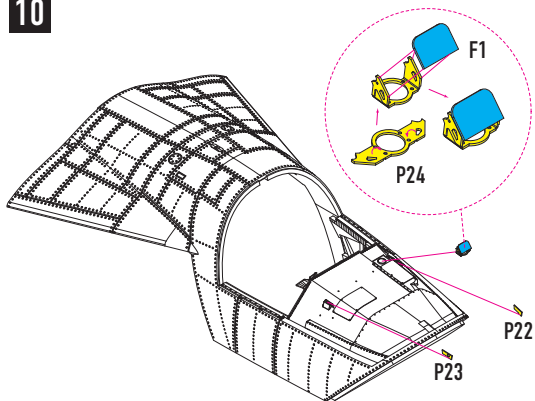
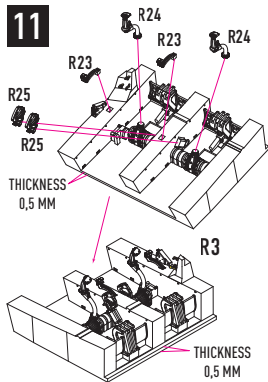
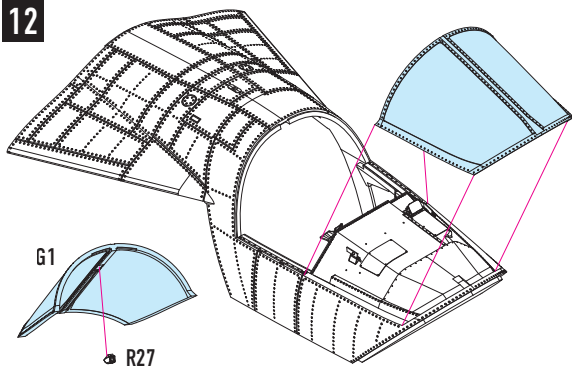


7

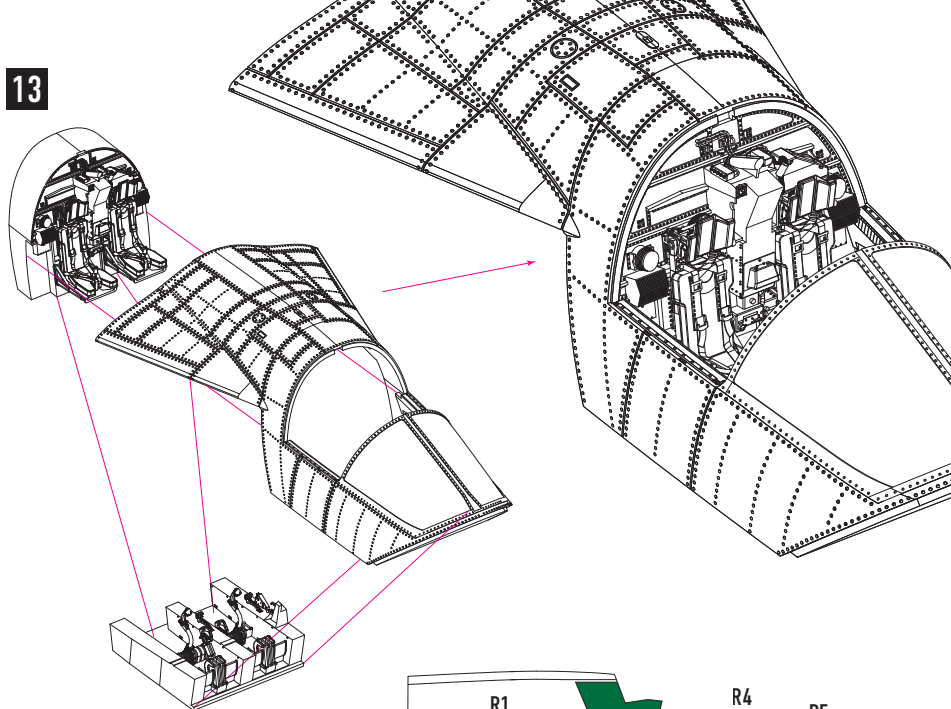


8

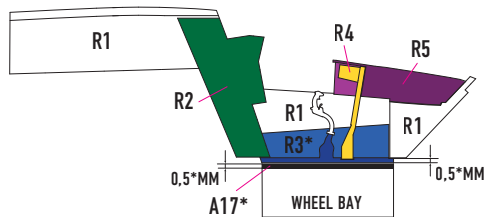


**9****10****11****12**

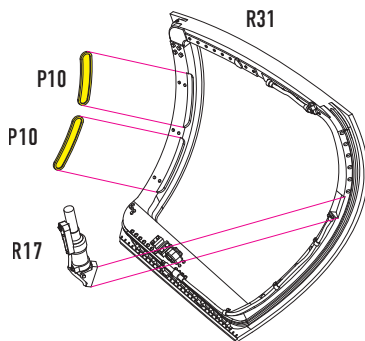
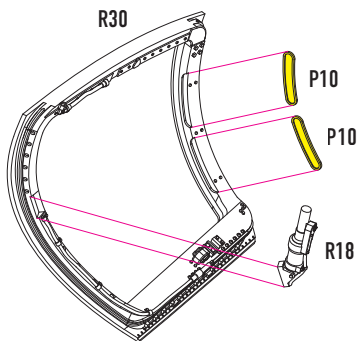
13



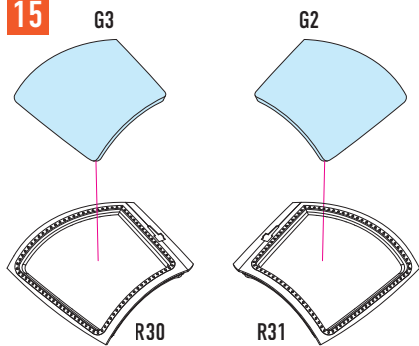
\* AFTER REMOVING THE STAND FROM THE PART R3, SHARPEN THE PART AT THE ANCHOR POINT TO A THICKNESS OF 0.5 MM. YOU ALSO NEED TO SHARPEN THE PART A17 FROM THE HOBBYBOSS SET



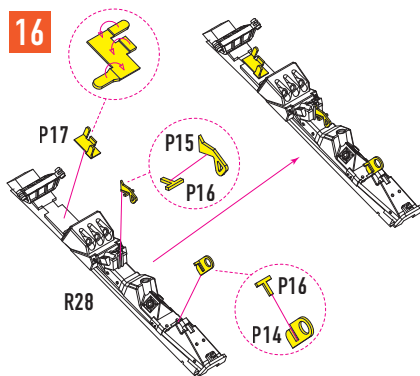
## 14 FOR CLOSED CANOPY



15



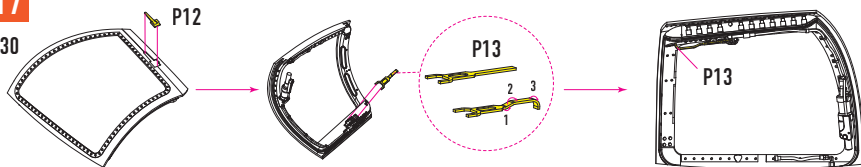
16





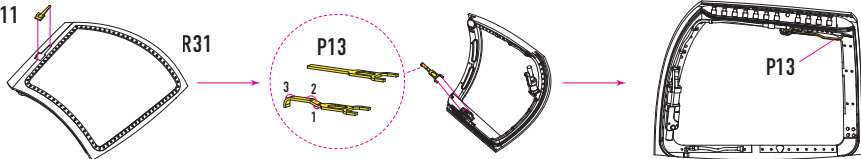
**17**

R30

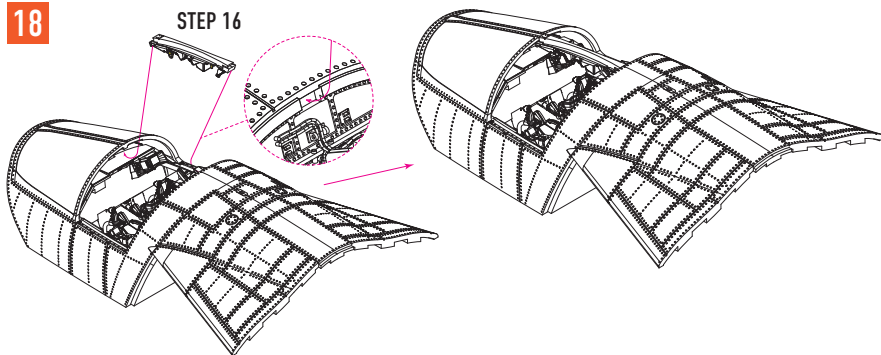


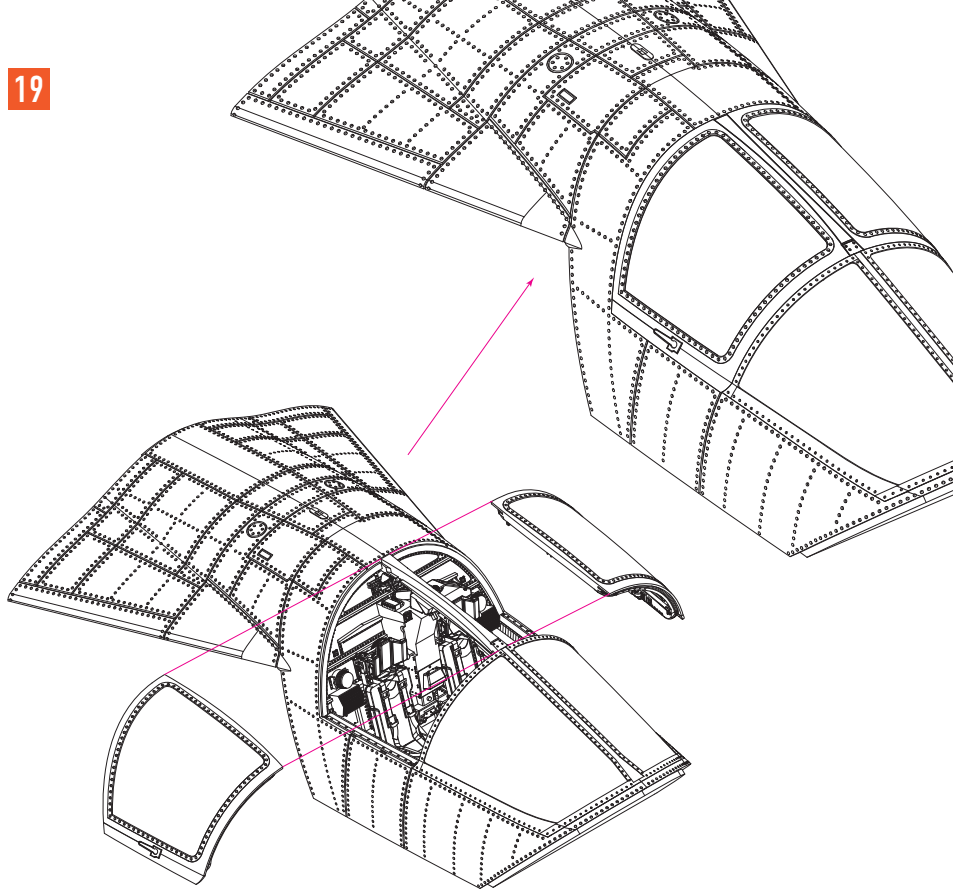
P11

R31

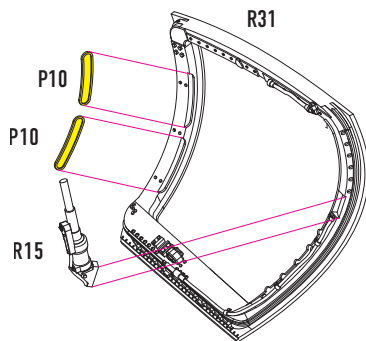
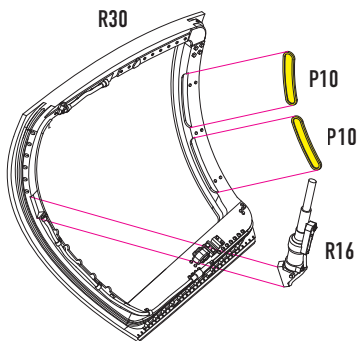
**18**

STEP 16

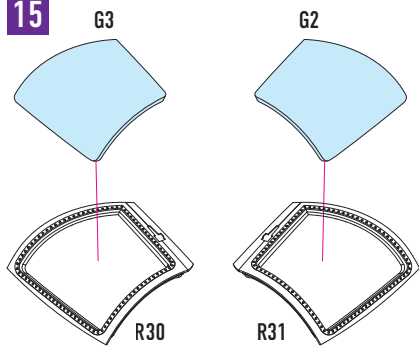




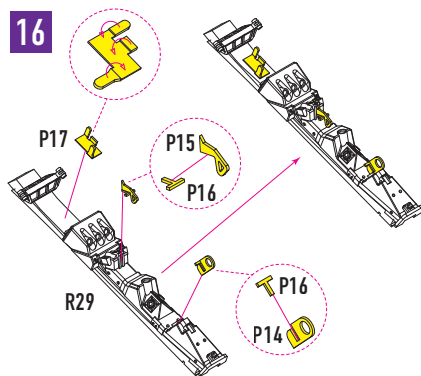
## 14 FOR OPEN CANOPY



## 15

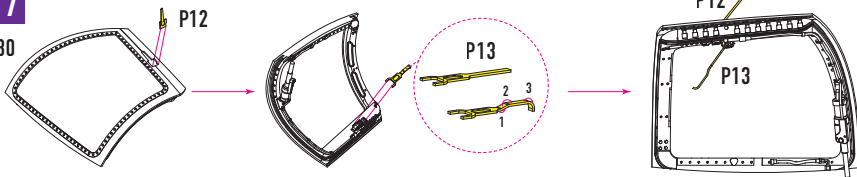


## 16



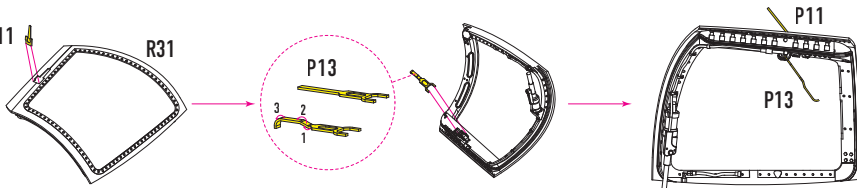
**17**

R30

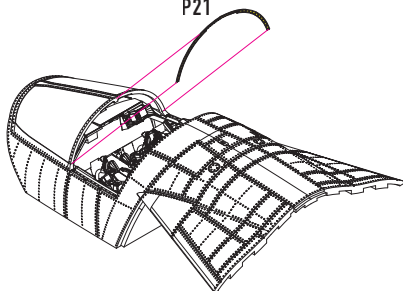


P11

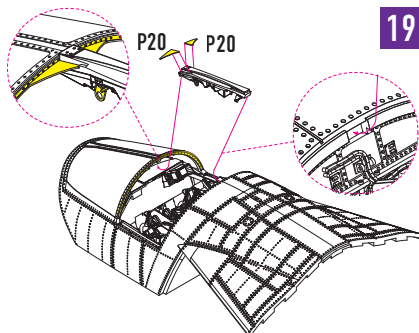
R31

**18**

P21

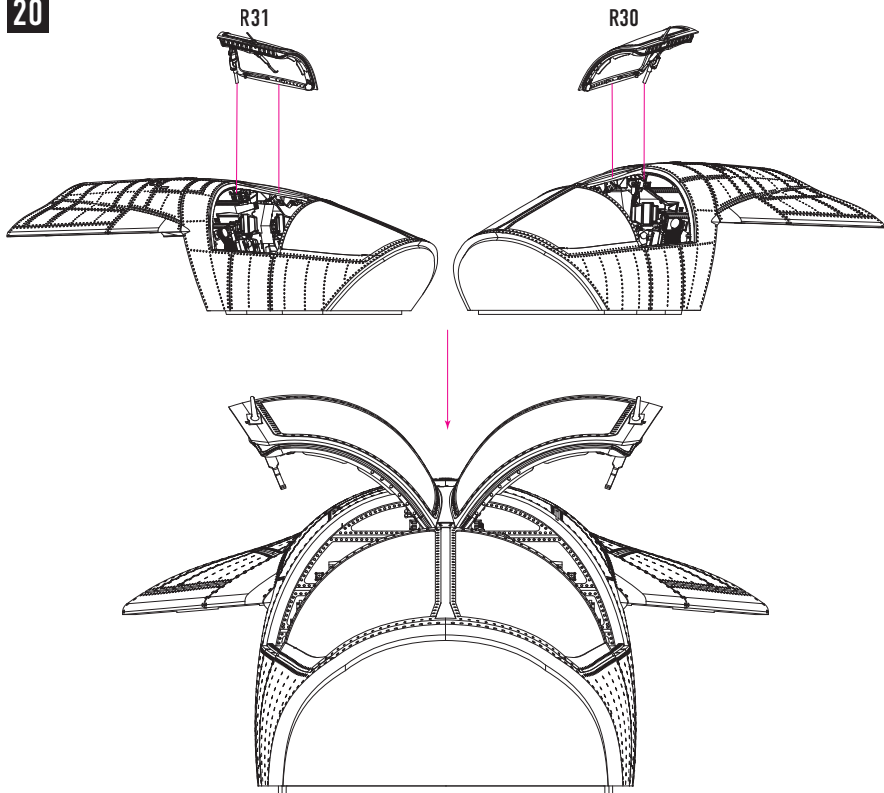
**19**

P20 P20



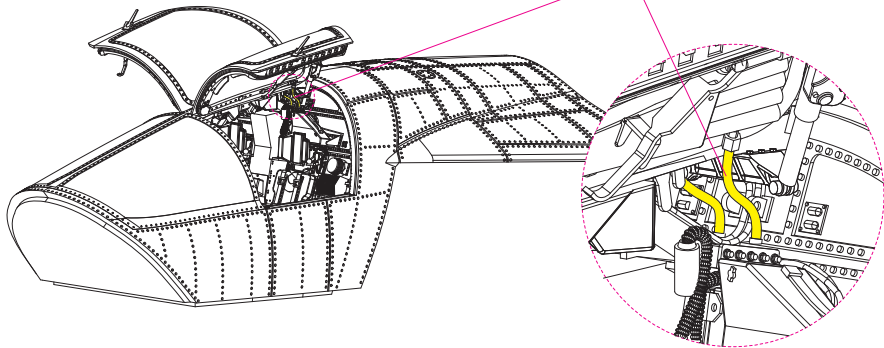
BEFORE GLUING MAKE THE FLEXION OF THE P20 PARTS  
EQUAL TO THE FLEXION OF THE G1 PART EDGE.

20

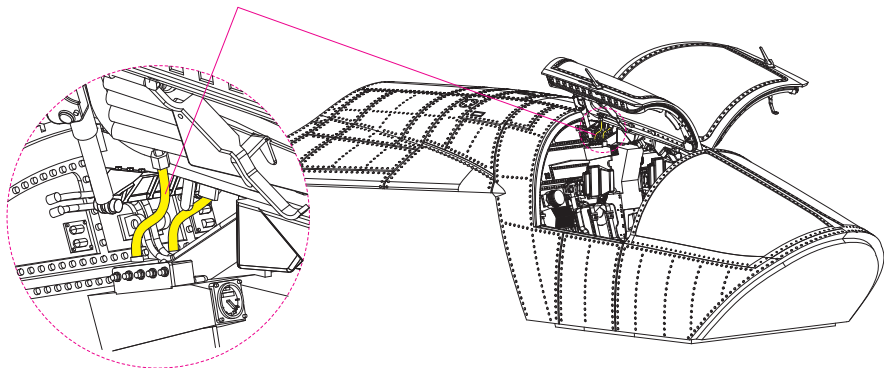


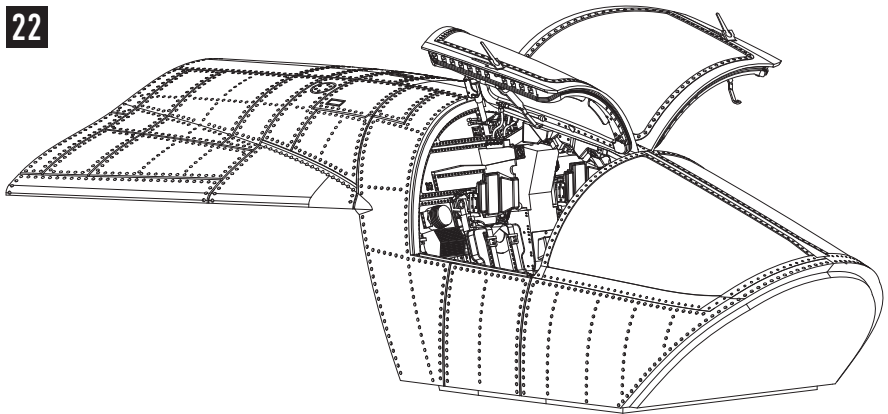
21

USE WIRE D: 0.3MM, L: 5MM

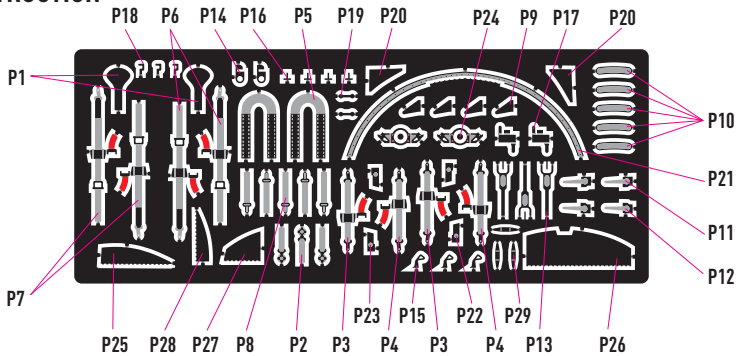


USE WIRE D: 0.3MM, L: 5MM





## PE INSTRUCTION



YOU CAN FIND INSTRUCTIONS  
IN PDF FORMAT ON THE WEBSITE

**RESKIT-MODELS.COM**

General Issues: [info@reskit.com.ua](mailto:info@reskit.com.ua)

Wholesales: [sales@reskit.com.ua](mailto:sales@reskit.com.ua)

Claim Resolution: [claims@reskit.com.ua](mailto:claims@reskit.com.ua)