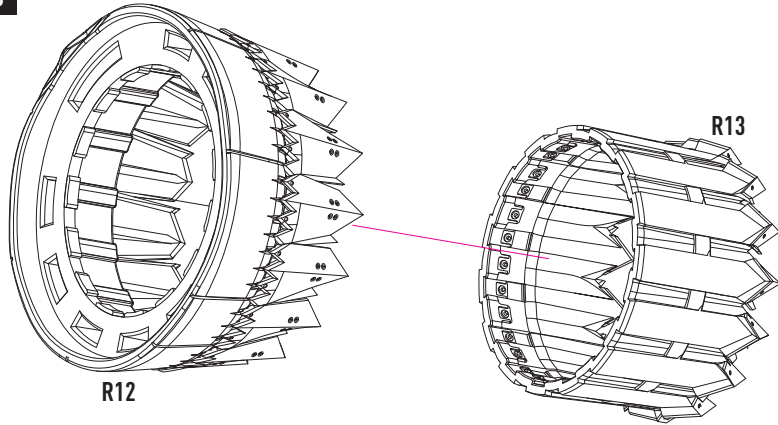
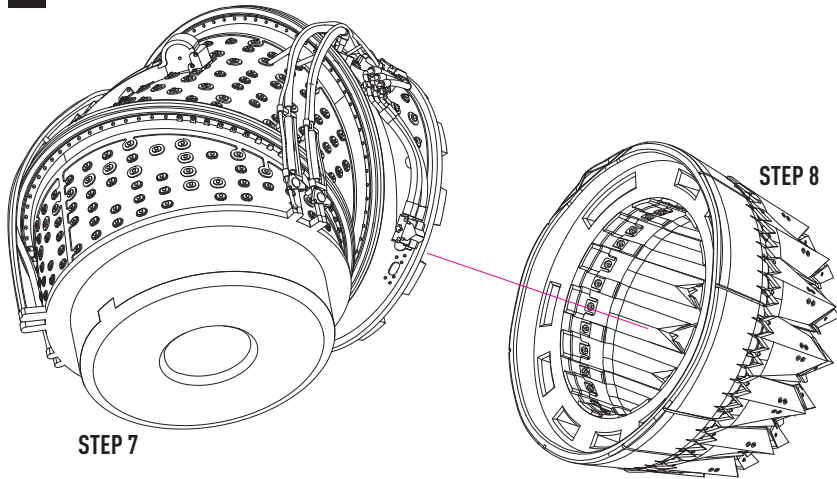


8

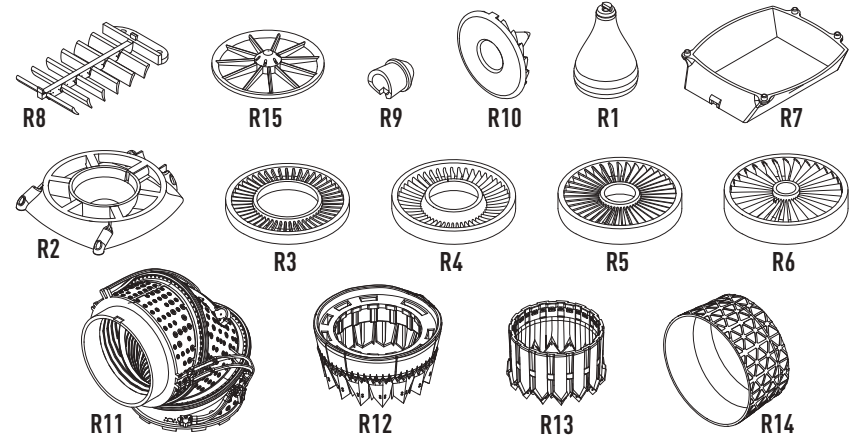


9



**10** IN ITALERI INSTRUCTIONS ON PAGE 14, STEP 19, WINDOW P - REPLACE PARTS FROM ITALERI KIT WITH CONSTRUCTION FROM STEP 9

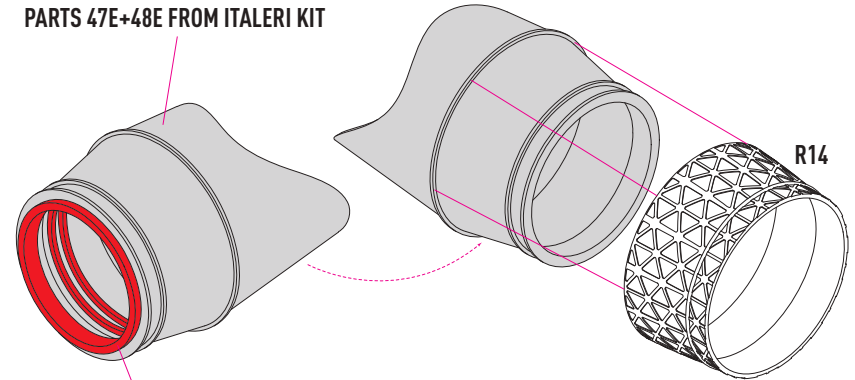
**DETAILS AFTER REMOVAL FROM SUPPORTS**



**1** IN ITALERI INSTRUCTIONS ON PAGE 7, STEP 9 - REPLACE PART 28G WITH PART R8

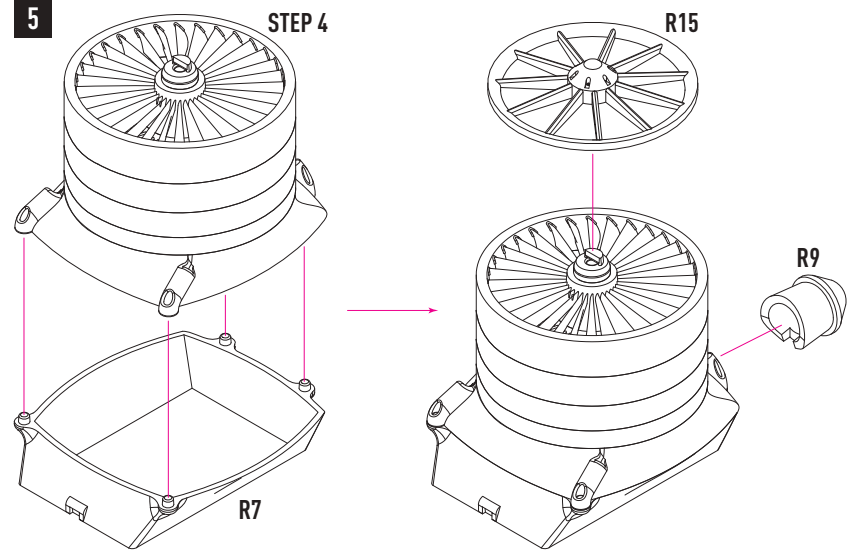
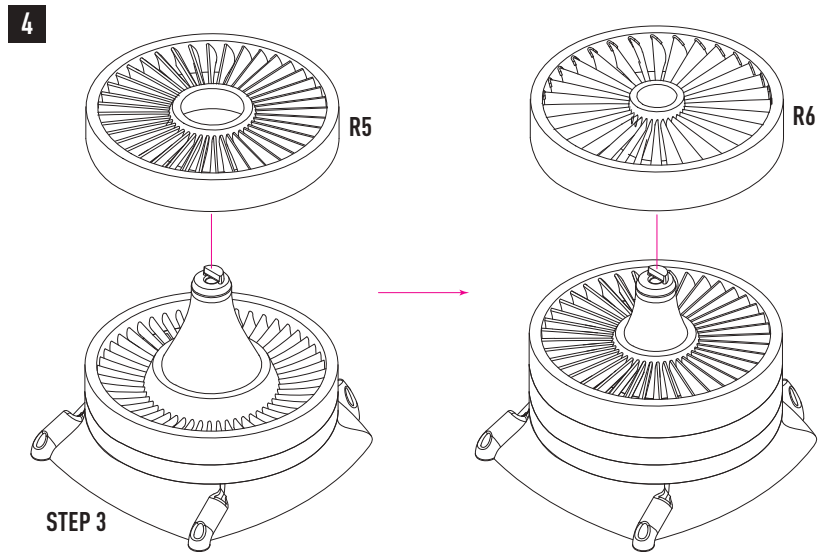
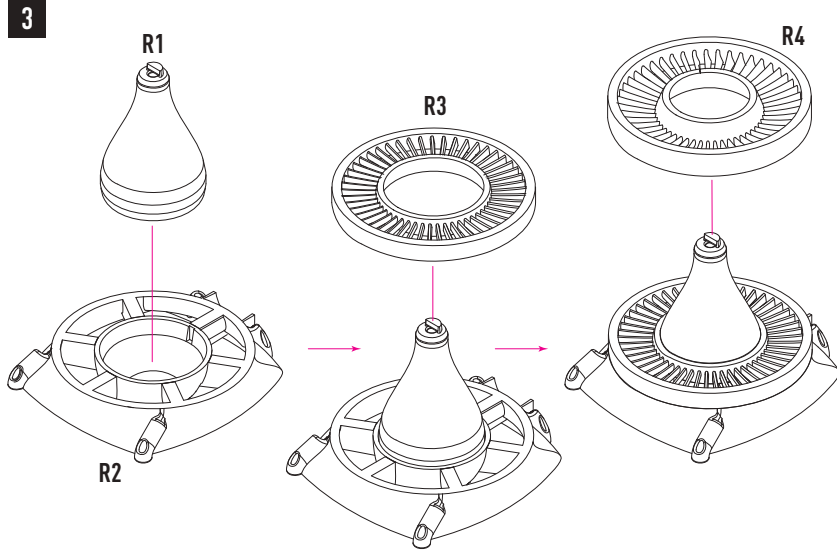
**2** IN ITALERI INSTRUCTIONS ON PAGE 8, STEP 11 - PREPARE PARTS 47E AND 48E FOR FURTHER INSTALLATION. DO NOT USE PART 57E

PARTS 47E+48E FROM ITALERI KIT



GRIND OFF TO THE  
LANDING DIAMETER 22 MM

INSTALL PART R14  
AFTER PART 53E



**6** IN ITALERI INSTRUCTIONS ON PAGE 8, STEP 11, WINDOW J - REPLACE STANDARD PARTS WITH CONSTRUCTION FROM STEP 5

